

# Carbide Inserts for Energy Industries

- Integrated manufacturing process for carbide inserts : 3D design, powder selection, pressing, sintering, grinding, polishing and coating.
- Diversified grades based on different applications.
- Suitable for various energy industries structure parts machining.



For weld seam milling

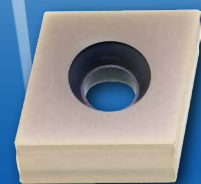


R5 Type

R8 Type

L Type

For steel sheet chamfering



C Type